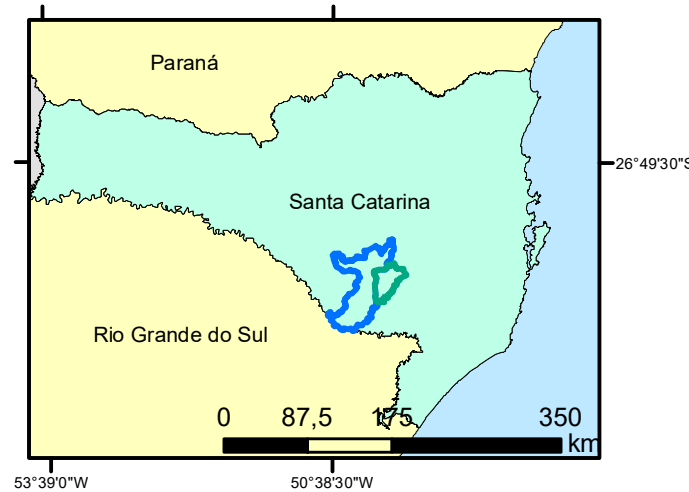
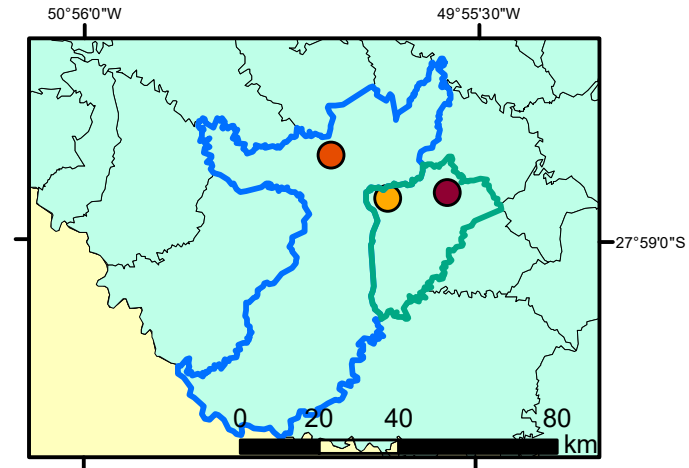
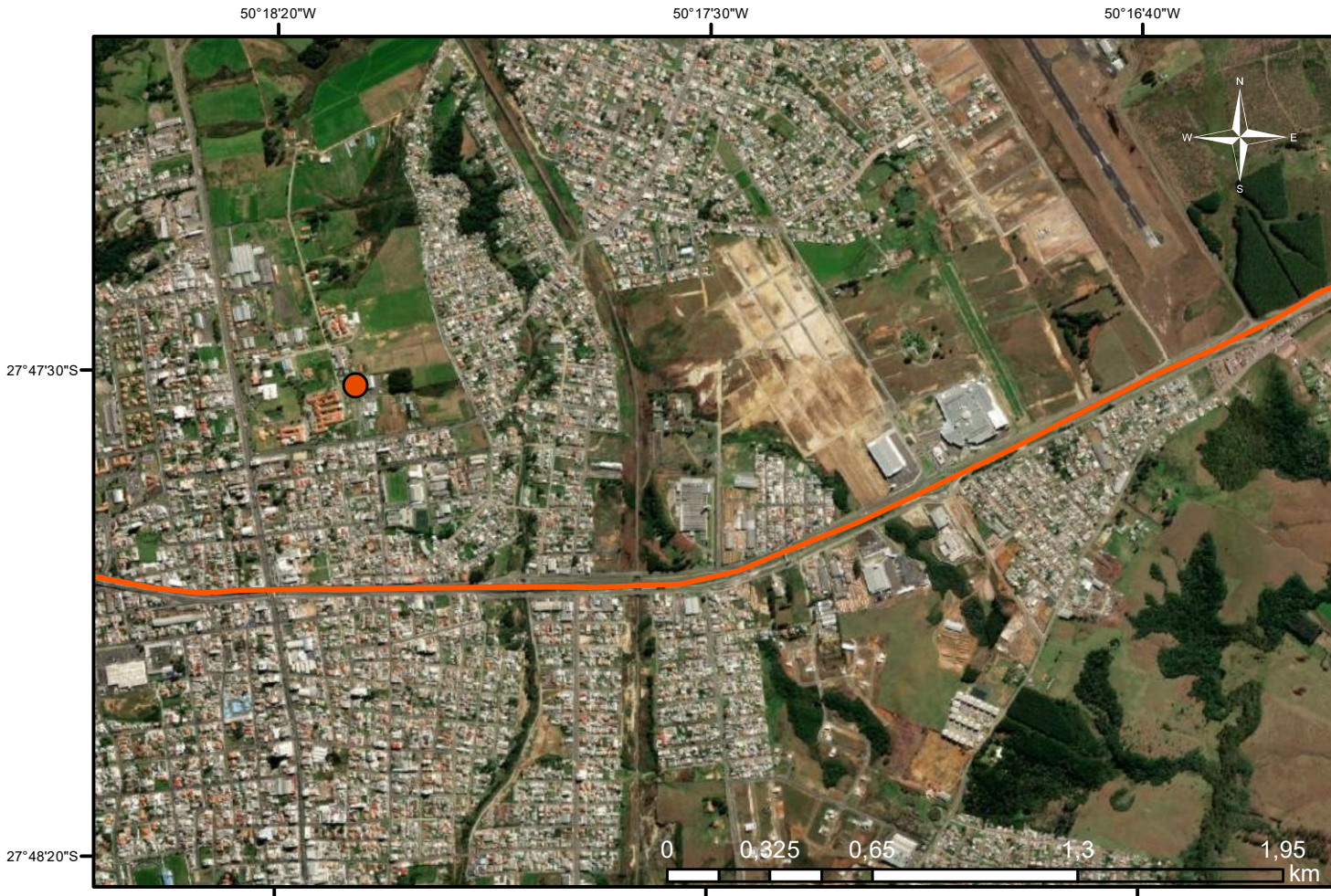


# Estação Pluviométrica CAV



Coordenadas Geográficas da Estação:  
27°47'31.46"S  
50°18'10.92"O

Sistema de Projeção UTM  
DATUM Sirgas 2000  
Zona 22S  
Fonte de dados: IBGE

## Legenda

- Estação CAV
- Rodovia BR 282
- Painel
- Lages
- Santa Catarina
- Brasil